

NetFORCE-15XPR™

HARSH - ENVIRONMENT COMPUTER

Citadel NetFORCE-15XPR™ rugged industrial computers deliver solid performance designed and engineered for challenging fixed and mobile applications.

CTADEL™
COMPUTER CORPORATION

NetFORCE-15XPR™

SYSTEM OVERVIEW

Our NetFORCE-XPR™ series of rugged industrial computers represents years of field-proven refinement driven by our commitment to deliver market-leading performance, reliability and value.

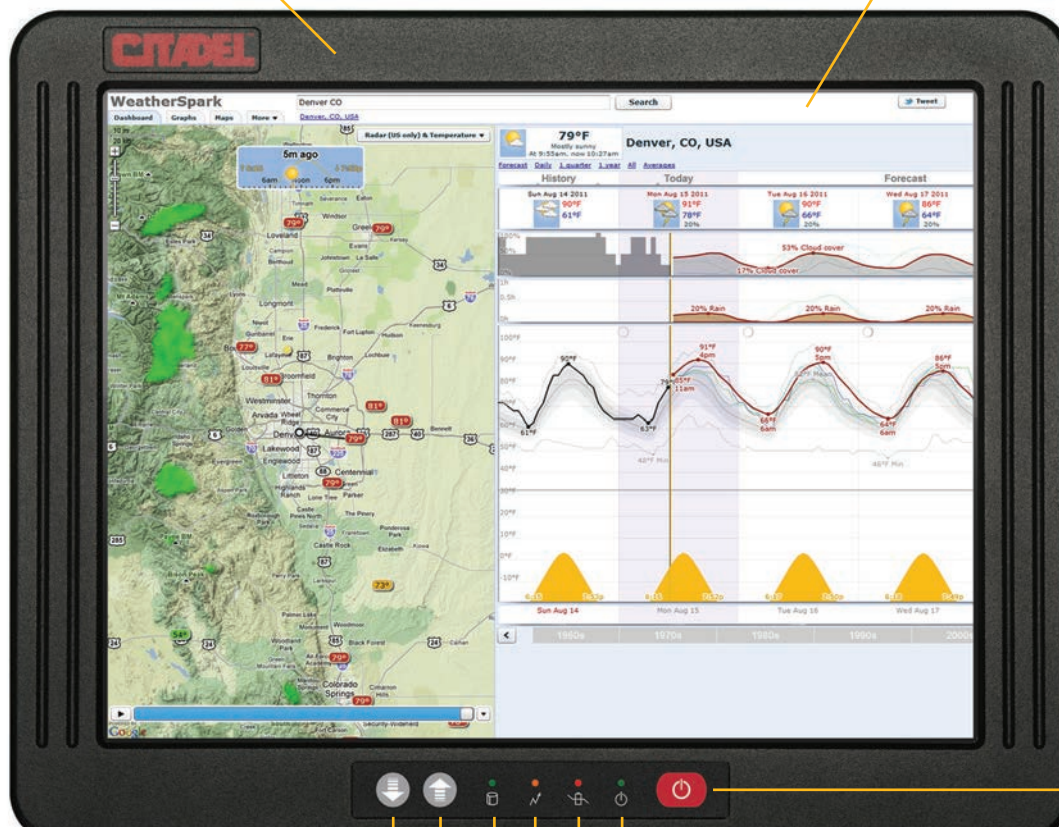
These rugged fully-sealed systems deliver reliable horsepower in your most challenging harsh-environments. Their advanced 64-bit quad-core CPU, high-performance graphics, 'glove compatible' touch screen and bright high-visibility displays offer an outstanding level of performance and operator convenience.

A wide-input DC-power system with battery backup keeps your applications up-and-running. NetFORCE-XPR™ systems withstand extremes of temperature, physical shock, vibration and environmental contaminants common to heavy industrial and weather-exposed installations.

- Advanced 64-bit quad-core CPU supporting 16-Gbytes DDR3 DRAM
- Enhanced 15.1" XGA display / 1024 X 768 / 16-million colors
- Intel dual-band Wi-Fi - 802.11abgn / 802.11ac / Bluetooth v4.1 / CCX
- Industry standard 10/100/1000 Industrial Gigabit Ethernet
- 12/24 - 60 VDC power system with internal UPS battery back-up
- Fully sealed NEMA-4 / IP-66 water-tight die-cast aluminum enclosure
- Rugged, fast solid-state 256-Mbyte+ SSD mass storage
- High-resolution 'glove compatible' touch screen
- Rugged, high-performance 'no break' flexible antennas
- mini-PCI Express expansion slot [CANBUS / GPS / custom I/O, etc.]
- Cold-start system preheater and integrated 'no frost' display options
- O/S compatibility: Windows 7 Pro/WES, Windows 10 IoT / Linux, etc.

Rugged aluminum enclosure fully sealed to NEMA 4 / IP-66

Bright 1024 X 768 XGA display and high-resolution touchscreen



Easy full-range dimming controls

User-friendly status indicators

Soft system START-STOP

NetFORCE-15XPR™

TECHNICAL SPECIFICATIONS

System CPU and Memory

Advanced QUAD-CORE 64-bit CPU supporting up to 16-Gbytes DDR3 System DRAM

Enhanced LCD Display & Touchscreen

Resolution: 1024 X 768 XGA --- Brightness Enhanced / Sunlight readable options

Viewing Area: 15.1" diagonal with high-resolution 'glove compatible' touchscreen

Video-blanking: automatic vehicle in-motion screen-blanking fully-supported

Mass Storage and Networking

High-performance SSD: 256-Mbytes (or more)

Wireless Networking: INTEL dual-band 802.11abgn / 802.11ac / Bluetooth v4.1 / Cisco CCX

Industrial Gigabit Ethernet: 10/100/1000 (cabled)

System Expansion

Internal mini-PCI Express slot accepts industry standard options for I/O expansion such as:

CANBUS / GPS navigation / analog & digital I/O, etc.

Fully-sealed NEMA-4 / IP-66 Power & I/O Industrial Interconnects

Power ON/OFF | DC-PWR IN | Keyboard & mouse | Dual USB | Industrial Ethernet |

Optional External Horn | RS-232 COM ports | External Coax Antenna Connector, etc.

Input Power

24 to 60 VDC (nominal)

12 VDC with optional cable adapter

72 VDC & above (multiple high-voltage options)

90-220 VAC 50/60 Hz. Universal AC Adapter

Total Input Power: < 60 watts (maximum) / Internal UPS (standard)

Environmental Specifications

Rating: UL50E Type-4 / NEMA-4 / IP-66

Temperature: -20 C to +50 C (operating)

Humidity: 0% - 95% (non-condensing)

Vibration: MIL-810F 2.0 G (15-1000 Hz.) (operating)

EMI/RFI: FCC Part-15 / MIL-STD-461E

Mechanical Specifications

Mounting: 2.5" Flex-mount ball and 75mm VESA mount

Width: 14.50" (36.85 cm)

Height: 12.00" (30.5 cm)

Depth: 3.50" (8.89 cm)

Weight: ~13.25 lbs. (6.0 kg) (typical)

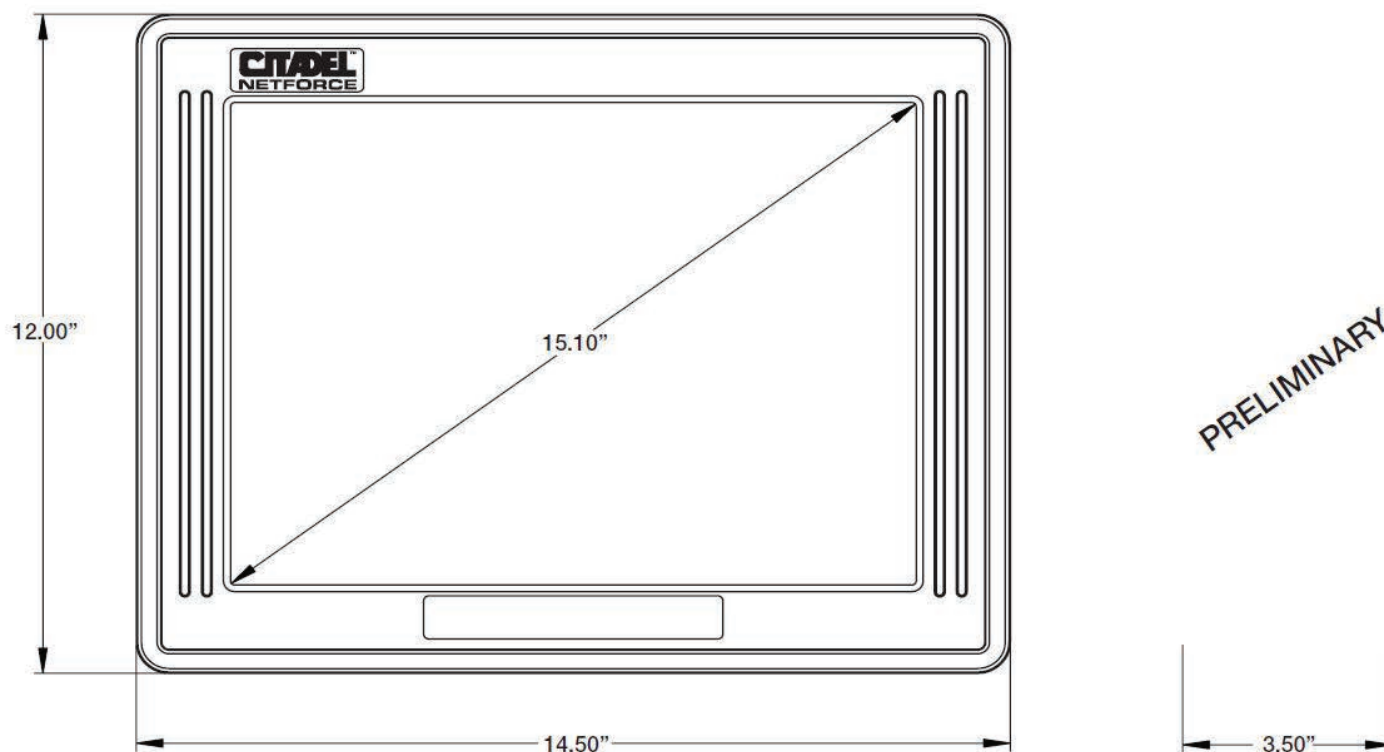
Rugged aluminum enclosure fully sealed to NEMA 4 / IP-66



Fully sealed power and I/O certified to NEMA 4 / IP-66 with custom I/O options available

NetFORCE-15XPR™

MECHANICAL DIMENSIONS



Since 1979, Citadel Computer Corporation has focused on the design and manufacturing of rugged industrial computers for challenging harsh-environment industrial and military applications.

Our systems combine state-of-the-art processing technology with practical real-world engineering to deliver reliable computing horsepower that withstands extremes of temperature, physical shock, vibration and exposure to the elements.

As reliable platforms performing a wide spectrum of tasks, Citadel systems are in service around globe supporting advanced processes, research and control for many of the world's leading companies.

CITADEL™
COMPUTER CORPORATION

CITADEL COMPUTER CORPORATION
16 Columbia Drive
Amherst, NH 03031-2304 USA

TEL: 603-672-5500

FAX: 603-672-5590

www.citadelcomputer.com

The specifications, performance characteristics and information contained herein are believed to be complete and accurate at the time of publication. However, Citadel Computer Corporation offers ongoing product improvements and expressly reserves the right to correct, update and/or modify product specifications without prior notice.

Citadel Computer Corporation™ and Citadel NetFORCE-15XPR™ are trademarks of Citadel Computer Corporation © 2019.

All rights reserved.

United States and international patents pending.

© 2019 CITADEL COMPUTER CORP. / NF15XPR - 2019A